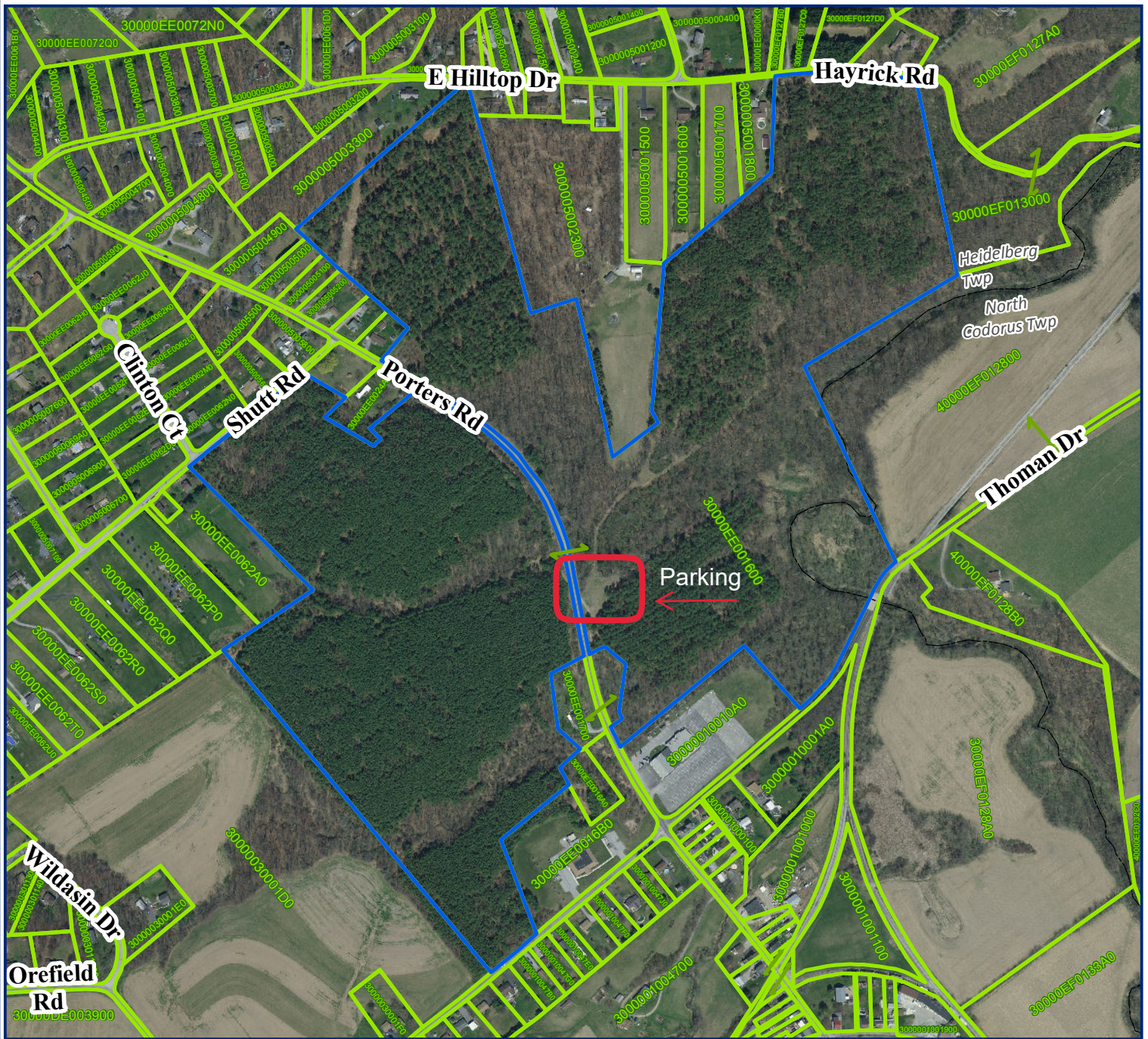


Parcel - 30000EE00160000000



Owner - HEIDELBURG TOWNSHIP
Address - PORTERS RD
Tax Municipality - Heidelberg Twp
School District - Spring Grove School District
Class - Exempt
Land Use - E - Exempt - Vacant Land
Acres - 131.76
Assessed Land Value - 10150
Assessed Building Value - 0
Assessed Total Value - 10150
Sale Date - 19-DEC-2012
Sale Price - 150000
Deed Book - 2207
Deed Page - 3936

Legend

- Selected Parcels
- Parcels
- US Route
- Interstate
- PA Turnpike
- State Road

Mapping Provided by



Last Updated: 2/7/2020

Layers should not be used at scales larger than 1:2400
 (Note: Pixilation will occur at scales 1" = below 200 Ft.)
 Aerial Photography - 2018

Disclaimer:

The York County Planning Commission provides this Geographic Information System map and/or data (collectively the "Data") as a public information service. The Data is not a legally recorded plan, survey, official tax map, or engineering schematic and should be used for only general information. Reasonable effort has been made to ensure that the Data is correct; however the Commission does not guarantee its accuracy, completeness, or timeliness. The Commission shall not be liable for any damages that may arise from the use of the Data.



1 inch=595 feet

